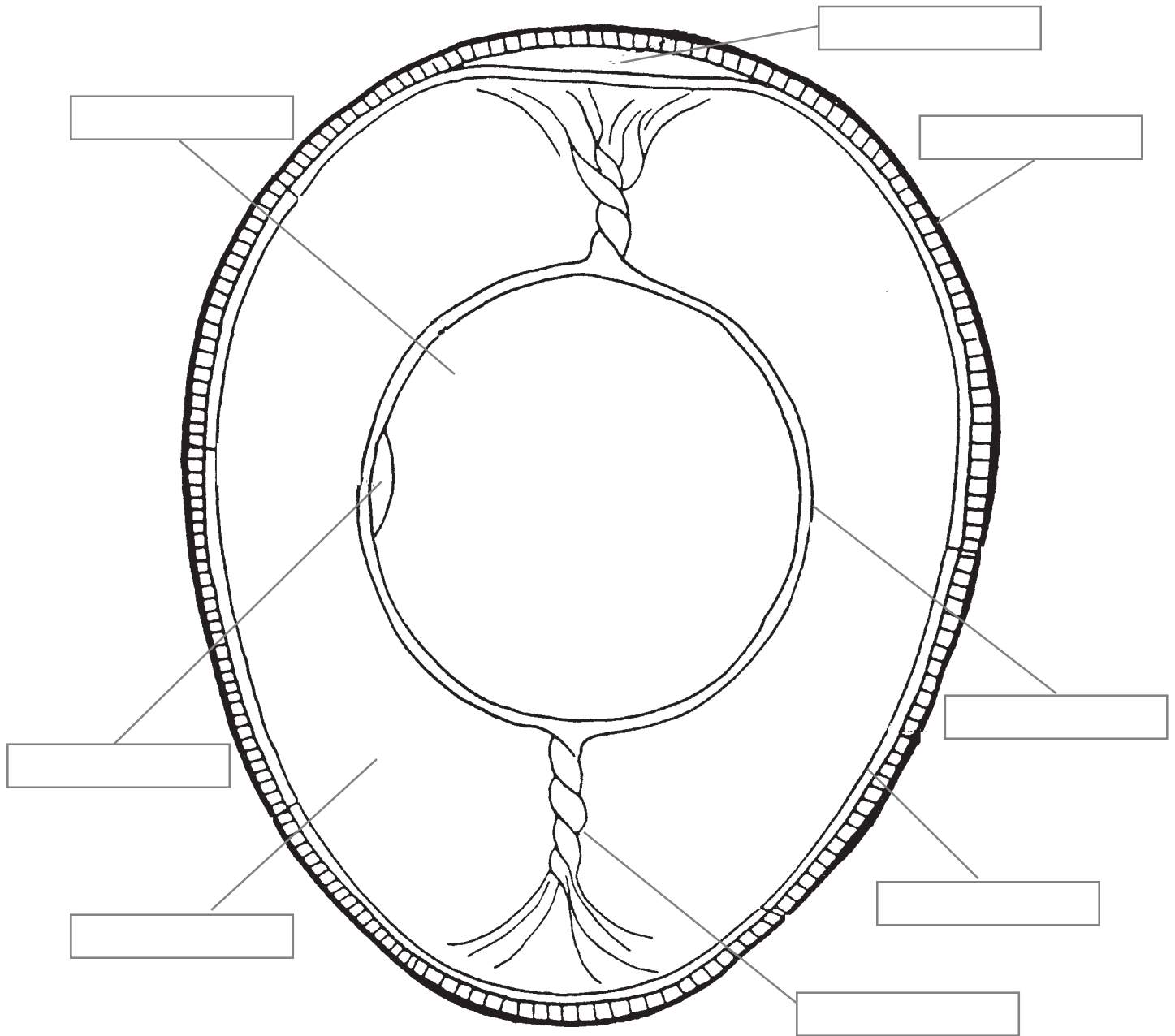


Egg Parts

Color each part of the egg a different color and label each part of the egg.



Use each word only once:

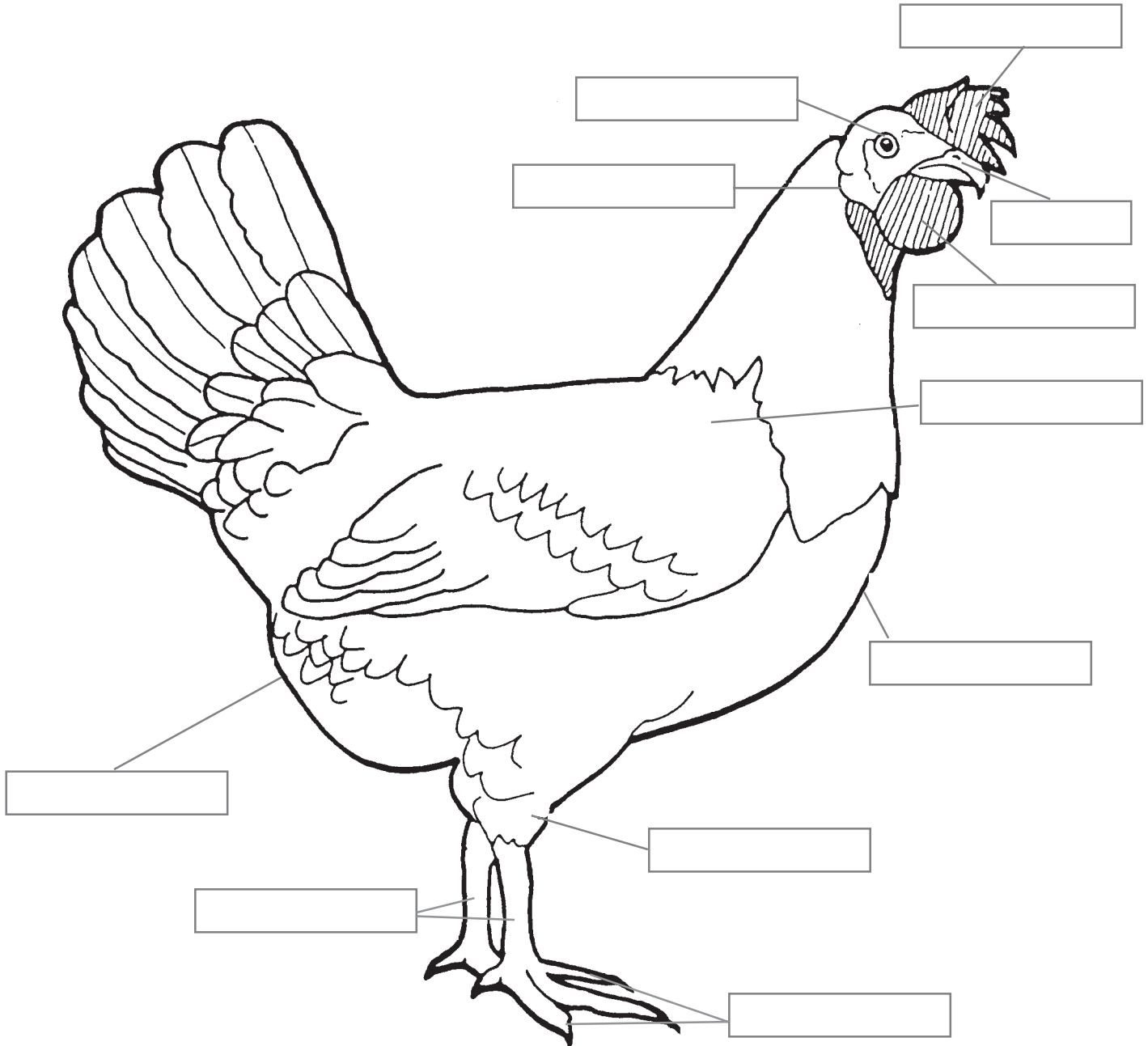
air cell
germinal disc
vitelline membrane

albumen or white
membranes
yolk

chalaza
shell

Parts of a Chicken

Color and label the parts of a chicken.



Use each word only once:

beak
eye
toes

breast
hock
vent

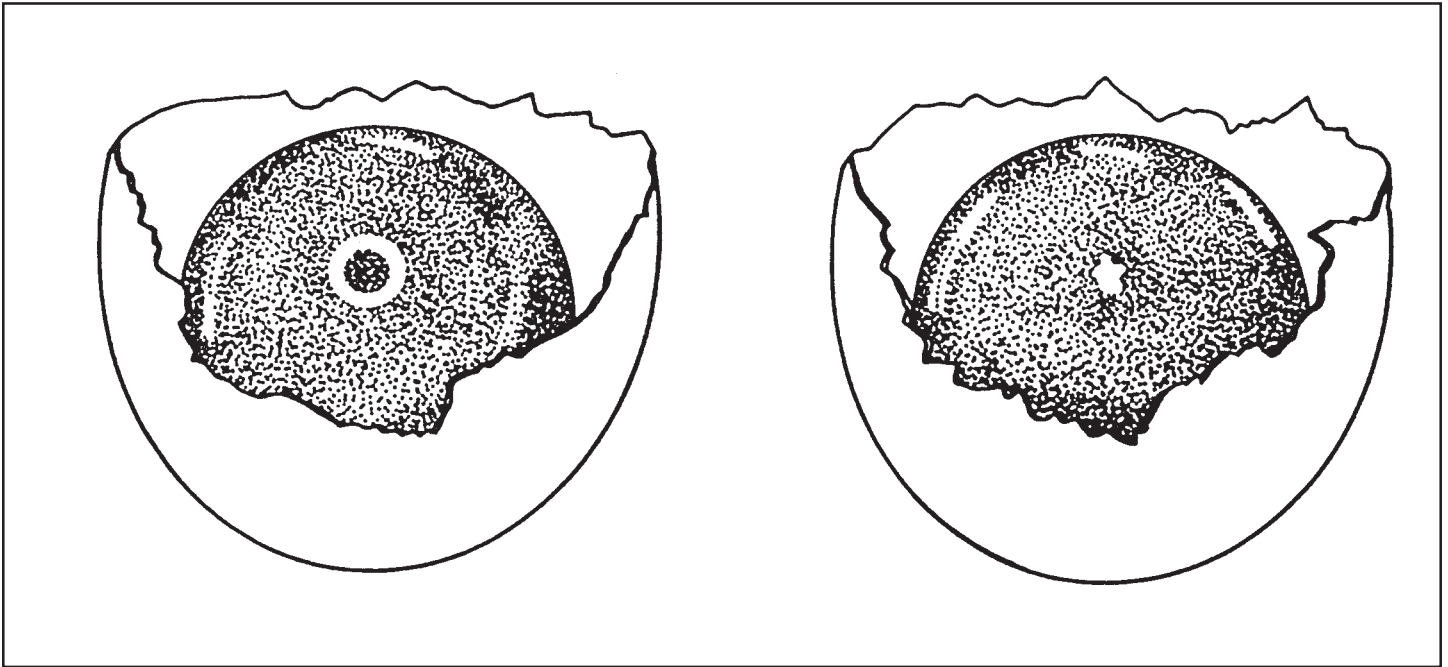
comb
shanks
wattles

ear lobe
shoulder

Which Egg Is Fertile?

When fertile eggs are incubated by either a hen or in an incubator, they grow.
What is needed to make an egg fertile?

Look at the picture below and mark the fertile egg.



How do you know that the egg you have marked is fertile? Explain.

Egg Grading

Match the egg to its grade.

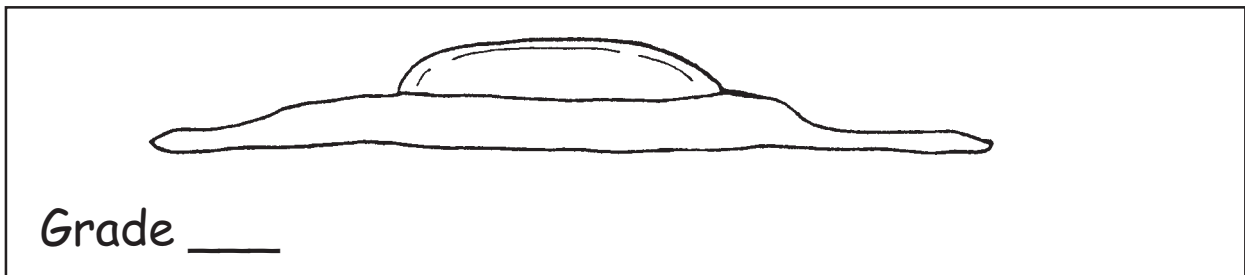
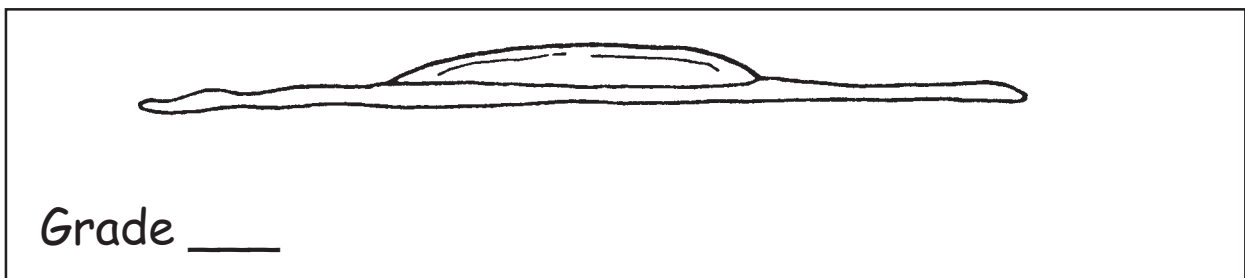
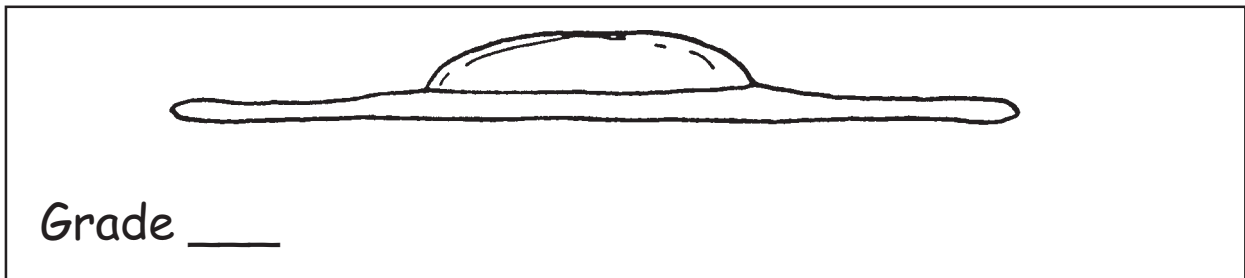
Eggs are graded for quality. Read the description of each grade of egg carefully and then grade each egg in the box with AA, A, or B.

A grade AA egg stands up tall. The yolk is firm and the area covered by white is small.

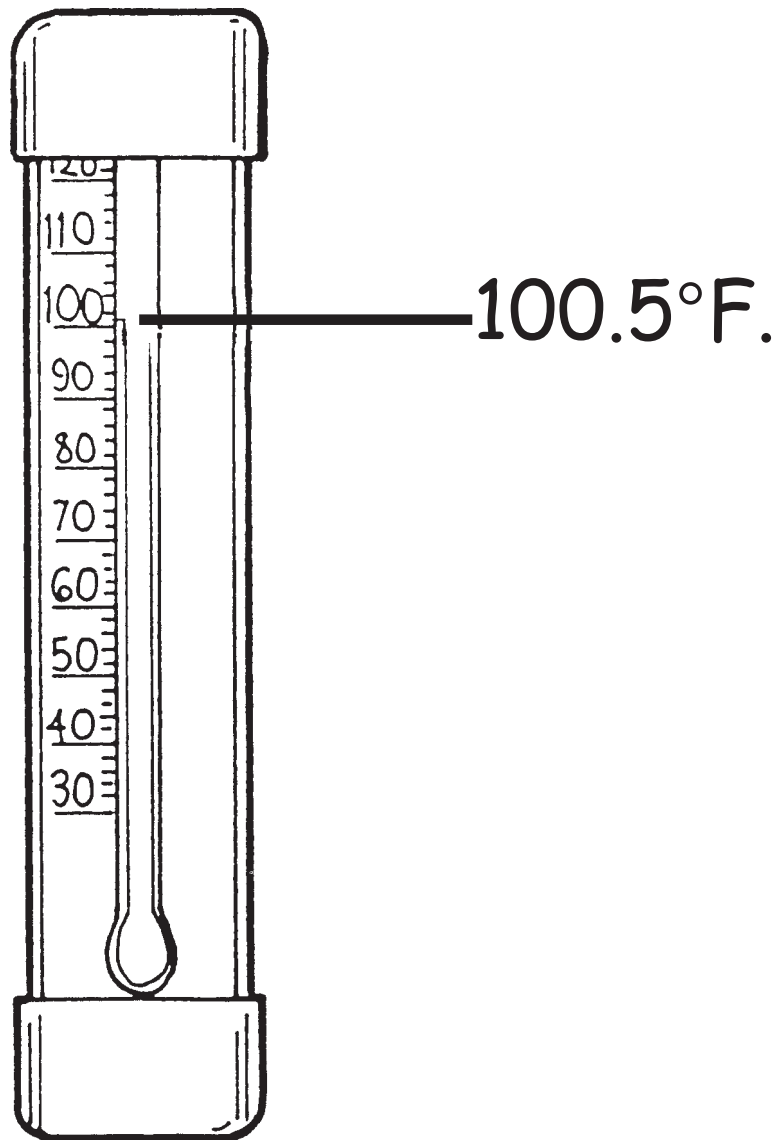
A grade A egg has a yolk that is round and tall. The white is a little flatter than a grade AA egg.

A grade B egg spreads out more. The yolk is flattened.

The grade of eggs can change if eggs are not stored correctly or if eggs are kept for a long time in the refrigerator.



The Thermometer

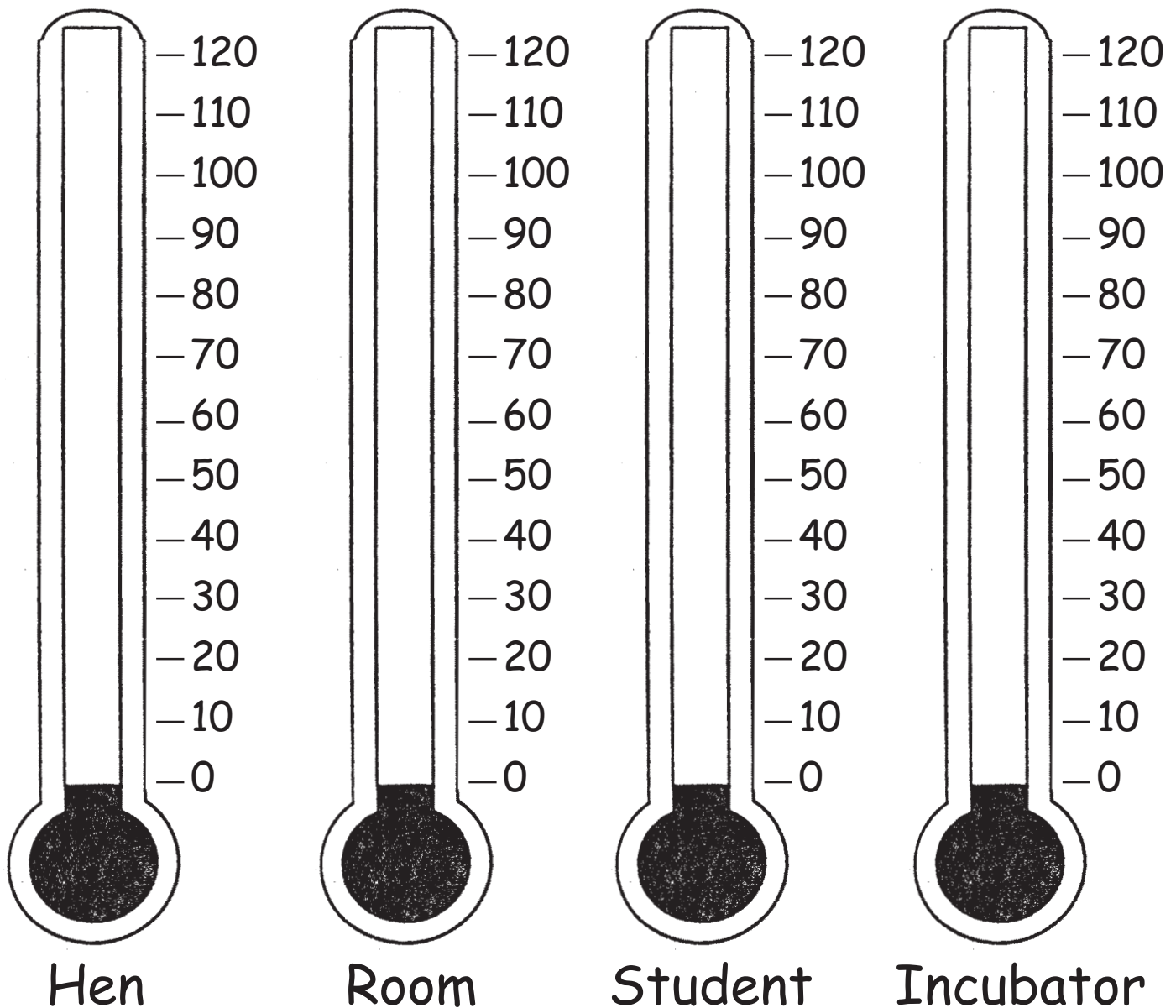


An instrument that measures temperature is a _____.

We tried to keep the temperature at _____. The temperature would _____ when the incubator was opened.

Color the mercury red.

Temperature Comparison Chart



Use your red crayon, marker or pencil to show the normal temperature of a healthy hen or student, the temperature in your classroom, and the correct temperature for the incubator.

- Who or what has the **highest** temperature?
- Who or what has the the **lowest** temperature?

Unscramble the Scrambled Eggs

1. geg

2. hne

3. koyl

4. htcah

5. lehls

6. oymrbe

7. aekb

8. iecckhn

9. orcuibtna

10. ingsw

11. tapemertrue

12. izdeltirfe

1. _____

7. _____

2. _____

8. _____

3. _____

9. _____

4. _____

10. _____

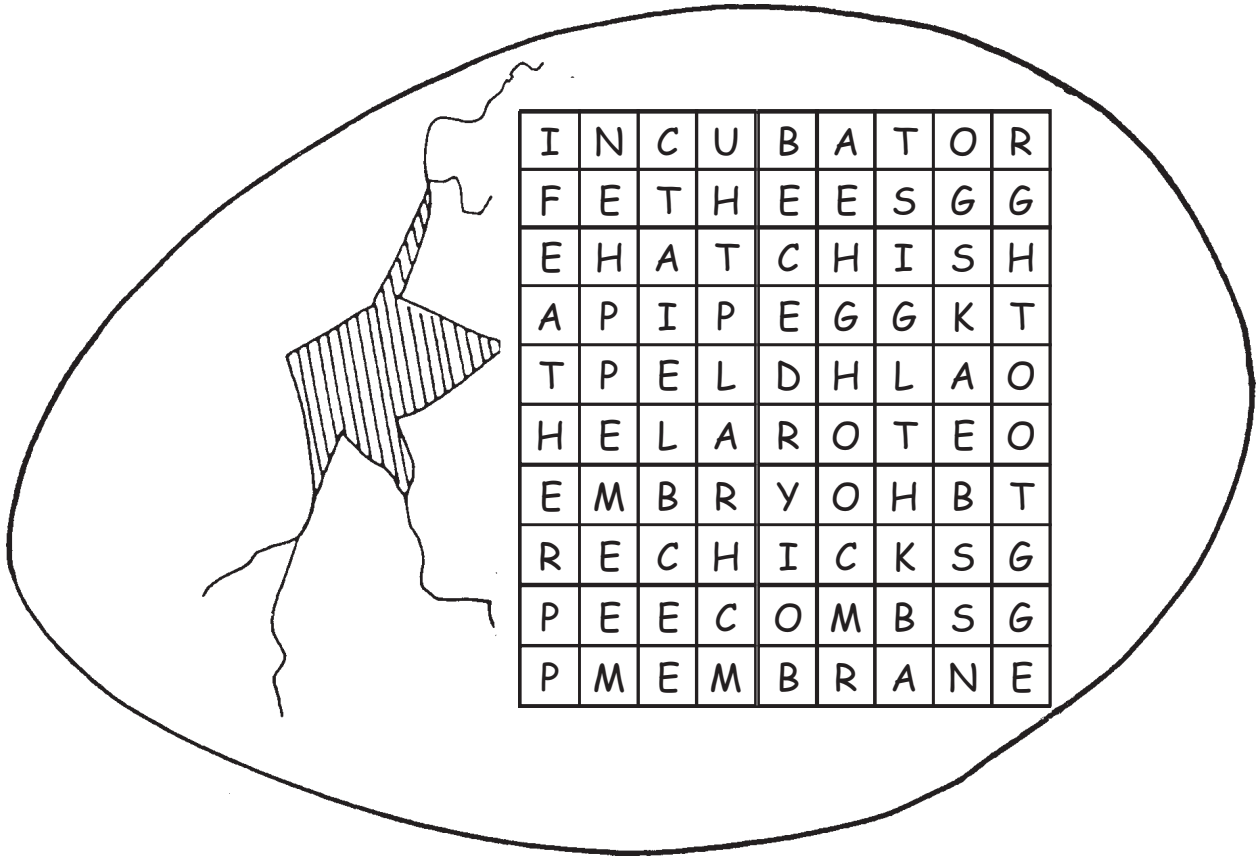
5. _____

11. _____

6. _____

12. _____

Hidden Words



Circle the hidden words on the list. The words can be hidden up, down or diagonally. When you have finished, use the left over letters to find a message. What is the message?

The message is _____

Words to find		
egg	hatch	egg tooth
embryo	feather	hen
membrane	shell	beak
incubator	yolk	combs

Science Vocabulary

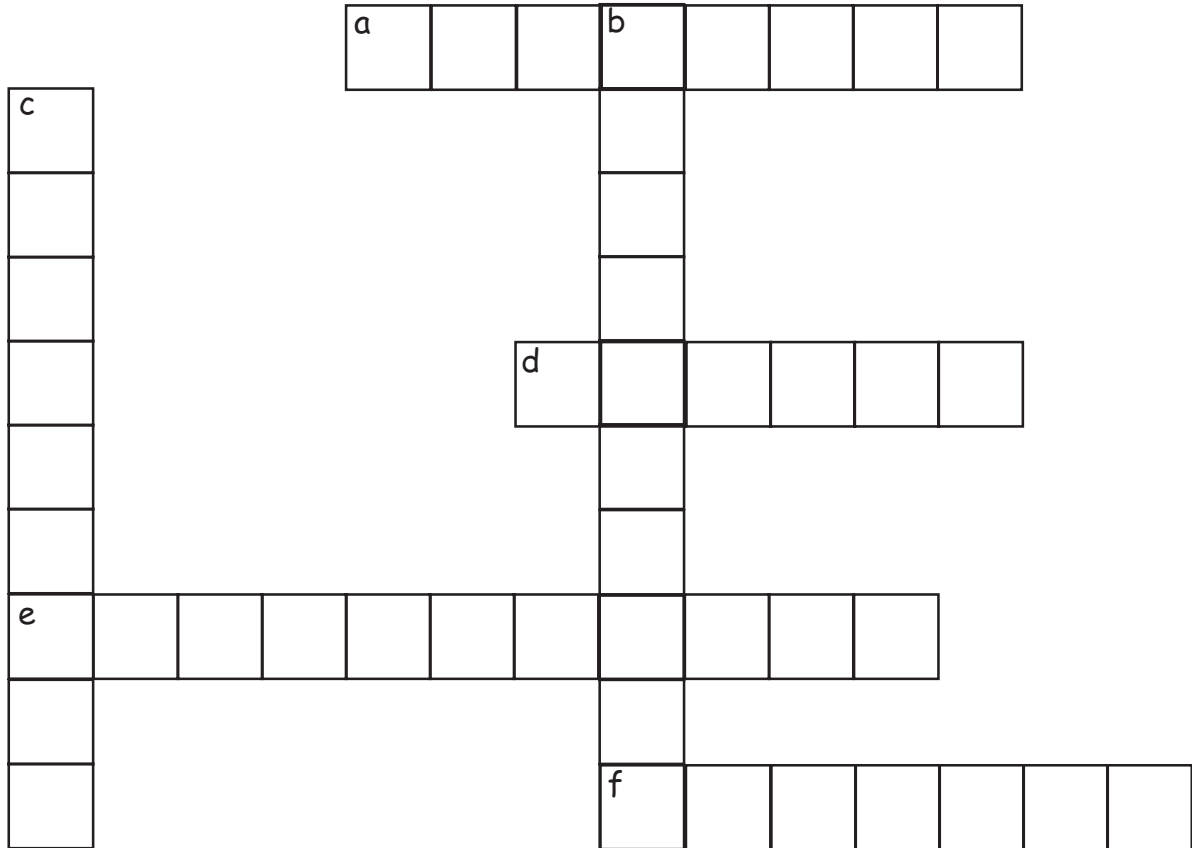
Put these words in alphabetical order.

hatch	chicken	temperature
peeps	egg tooth	membrane
heart	rooster	blood vessels
egg	hen	incubator
beak	chick	fertilized
yolk	embryo	development
white	sac	thermometer
shell	wings	feathers

- | | |
|-----------|-----------|
| 1. _____ | 13. _____ |
| 2. _____ | 14. _____ |
| 3. _____ | 15. _____ |
| 4. _____ | 16. _____ |
| 5. _____ | 17. _____ |
| 6. _____ | 18. _____ |
| 7. _____ | 19. _____ |
| 8. _____ | 20. _____ |
| 9. _____ | 21. _____ |
| 10. _____ | 22. _____ |
| 11. _____ | 23. _____ |
| 12. _____ | 24. _____ |

Choose 12 vocabulary words. Use each word in a complete sentence.

Crossword Puzzle



- a. (across) What heats the incubator? (two words)
- b. (down) What controls the light bulb and the heat in the incubator?
- c. (down) What do you use to incubate *eggs*?
- d. (across) What do you call an unborn chick?
- e. (across) What does a thermometer measure?
- f. (across) What job must be done with the eggs three or more times a day?